

MBB Half-cell Monofacial Black-frame Module (54)
TW395~420MAP
 M10-108-H (Black Frame)

PRODUCT FEATURES

- 

High Power Output
Low LCOE
- 

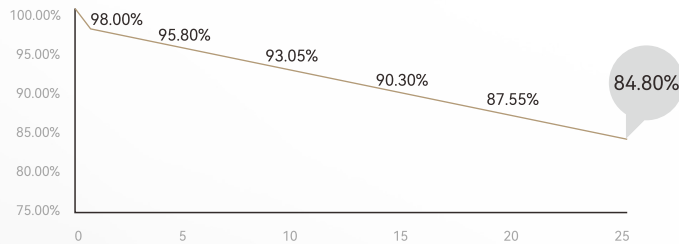
Maximum Power
420W+
- 

High Reliability
- 

Low LID

POWER WARRANTY

1st year <2%, 0.55% power degradation per year from 2 to 25 years

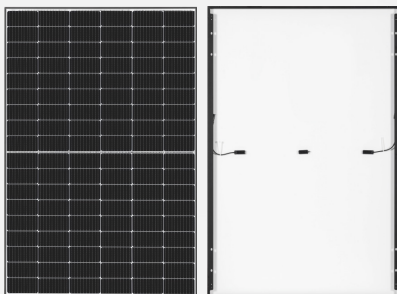


12 12-year warranty for materials

25 25-year warranty for linear power output

PRODUCT CERTIFICATIONS

- ISO9001: 2015/Quality Management System
- ISO14001: 2015/Environment Management System
- ISO45001: 2018/Occupational Health and Safety



Front

Rear

Electrical Characteristics (STC)

Module type: TW***MAP-108-H (Black Frame)

Maximum power: Pm (W)	395	400	405	410	415	420
Open circuit voltage: Voc (V)	36.63	36.78	36.93	37.08	37.23	37.38
Short circuit current: Isc (A)	13.42	13.52	13.61	13.70	13.80	13.89
Voltage at maximum power point: Vm (V)	30.86	31.01	31.16	31.31	31.46	31.61
Current at maximum power point: Im (A)	12.80	12.90	13.00	13.09	13.19	13.29
Module efficiency: η (%)	20.2	20.5	20.7	21.0	21.3	21.5

STC: Irradiance 1000W/m², Cell Temperature 25°C, Air Mass1.5, Measuring tolerance: \pm 3%

Electrical Characteristics (NMOT)

Maximum power: Pm (W)	299.0	302.8	306.6	310.3	314.1	317.9
Open circuit voltage: Voc (V)	34.58	34.72	34.86	35.00	35.15	35.29
Short circuit current: Isc (A)	10.75	10.82	10.90	10.97	11.05	11.12
Voltage at maximum power point: Vm (V)	28.62	28.76	28.90	29.04	29.18	29.32
Current at maximum power point: Im (A)	10.44	10.52	10.60	10.68	10.76	10.84

NMOT: Irradiance 800W/m², Ambient Temperature 20 °C, Wind Speed 1m/s

Mechanical Parameters

Cells	Monocrystalline silicon cell
Orientation	108 (6×18)
Size	1722±2×1134±2×30mm
Weight	20.5kg
Glass	3.2mm high transmittance, AR coated heat strengthened glass
Backsheet	White
Frame	Anodized aluminum alloy frame
Junction Box	IP68, 3 diodes
Cable	4.0mm ² , Landscape: 1200/1200mm,
Connector	MC4 Compatible
Wind/Snow Load	2400Pa/5400Pa
Packaging	36pcs per pallet, 936pcs per 40HC

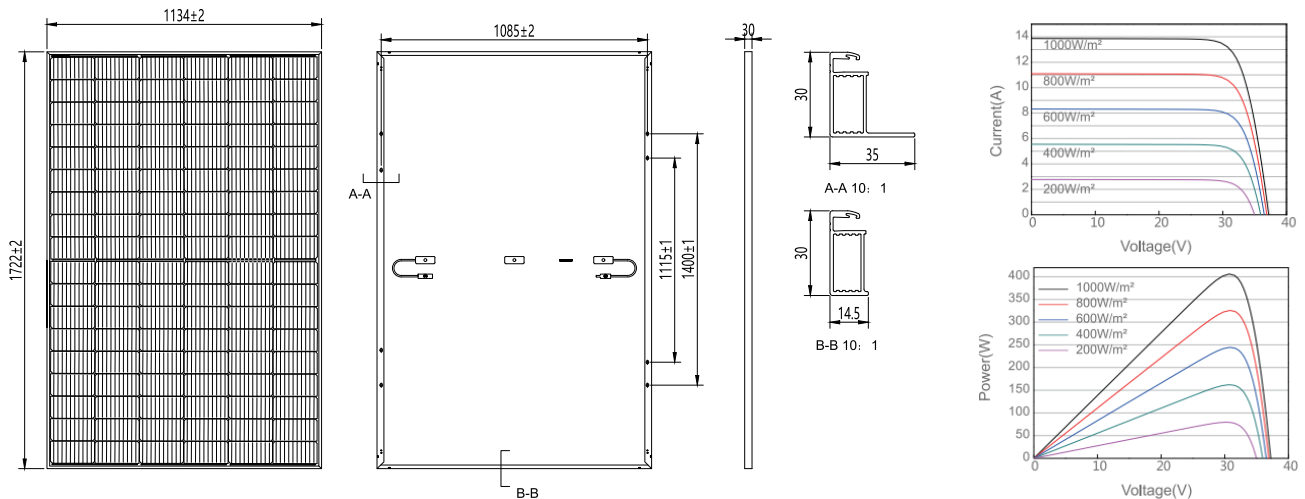
Operating Parameters

Operational Temperature	-40°C~+85°C
Maximum System Voltage	1500V DC
Maximum Series Fuse Rating	25A
Power Output Tolerance	0~+5W

Temperature Ratings

Temperature Coefficient (Pmax)	-0.35%/°C
Temperature Coefficient (Voc)	-0.27%/°C
Temperature Coefficient (Isc)	0.045%/°C
NMOT	43±2°C

Drawings (Unit: mm)



Email: sales@tongwei.com Web: www.tw-solar.com Add: 888 Changning Avenue, High-tech Zone, Hefei City, Anhui Province

With technological progress and product updates, there may be deviations between the technical parameters of Tongwei's module products and the technical parameters contained in this specification, and Tongwei Solar has the right to adjust the technical parameters at any time without notifying the customer, the final interpretation of the technical specification is vested in Tongwei Solar.